

SERVICE HANDBOOK

PORT OF PIETARSAARI / JAKOBSTAD
2019



PORT OF

JAKOBSTAD  PIETARSAARI

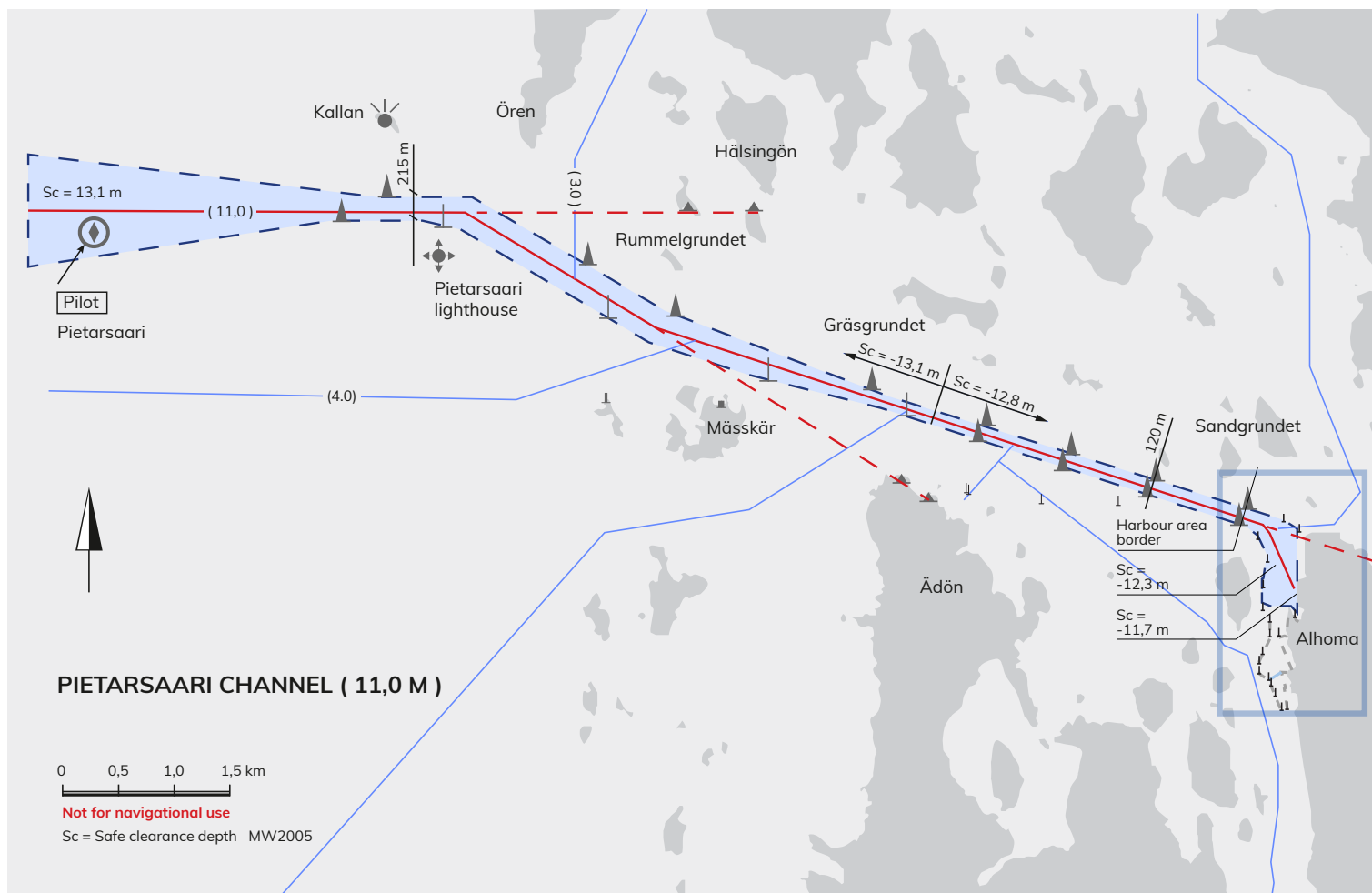
2 CONTENTS

General Information	3
Harbour Services	4
Port Operator	5
Technical Information	6
Safety and Security	7
Harbour Approaches	8
Traffic Service	9
Environment	10
Contact Information	11

PORT OF PIETARSAARI / JAKOBSTAD

Alholmintie 76
FI 68600 PIETARSAARI-JAKOBSTAD
FINLAND

Tel. +358 6 723 6128
www.portofpietarsaari.fi
www.portofjakobstad.fi



MAIN SERVICE AREA	Specialised in handling pulp, sawn timber, paper, chemicals and mixed goods
LAND AND SEA AREA	Land area used 38 ha, total 55 ha. Water area 38 ha
WAREHOUSE CAPACITY	47 000 m ²
STORAGE CAPACITY	15 ha
BERTH SPACE	Total 927 m
FAIRWAY	11 meters channel. Pilot boarding station approx. 2.7 km W of Pietarsaari/Jakobstad lighthouse port. Length approx. 12 km / 6 nautical miles. Manoeuvring basin 300 m diameter.



- 1 Port Authority
- 2 Port Operator
- 3 Cement (100 m / 7.4 m)
- 4 South (165 m / 7.4 m)
- 5 Buskö (160 m / 7.4m + Ro-Ro 22.5 m)
- 6 Laukko I (152 m / 11 m + Ro-Ro 29 m)
- 7 Laukko II (150 m / 11 m)
- 8 Laukko III (200 m / 11 m)

Heights of berths are 2.30 m (average sea level).

All berths are equipped with electricity, water and safety facilities.

Open throughout the year.

Complete access control system at the main gate of the closed harbour area.

EMERGENCY NUMBER 112

4 HARBOUR SERVICES

ACCESS CONTROL SYSTEM

The Port of Pietarsaari/Jakobstad has complete access control at the main gate of the closed harbour area. The main gate is located at the end of Alholmintie. There is recording camera surveillance on the port area. Port supervisors act also as Port Control. In all issues concerning access control contact the **Port Control Tel. + 358 6 723 1388, portcontrol@portofpietarsaari.fi**

FRESH WATER SERVICES

Fresh water for vessels can be ordered from the **Port Control Tel. + 358 6 723 1388, portcontrol@portofpietarsaari.fi**

WASTE MANAGEMENT

The receipt of any waste requires an advance notice to the **Port Control Tel. + 358 6 723 1388, portcontrol@portofpietarsaari.fi**

The receipt of oily waste or sewage requires an advance notice 24 prior notice prior to the intended time of delivery to the **Port Control Tel. + 358 6 723 1388, portcontrol@portofpietarsaari.fi**

SHIPPING TRAFFIC LIST

The Port of Pietarsaari/Jakobstad shippinglist is available from www.portofpietarsaari.fi.

TUGS

Privately owned tugs are available 24 hours a day by requiring 3 hours notice in advance.

Oy Kraftline Ab Tel. www.kraftline.fi +358 40 557 5692.

OIL POLLUTION CONTROL

In the event of an oil spill or accident involving the risk of oil pollution, contact should be made immediately to the **City of Pietarsaari/Jakobstad Rescue Department, emergency, Tel. 112 and to the Port Control Tel. + 358 6 723 1388, portcontrol@portofpietarsaari.fi**.

DANGEROUS GOODS

For information about transport and handling of dangerous goods contact the **Port Control Tel. + 358 6 723 1388, portcontrol@portofpietarsaari.fi**

ICEBREAKER

During the winter season, icebreaking within the port is carried out by the privately owned company **Oy Kraftline Ab, Tel. +358 40 557 5692.**

Icebreaking outside of the port is organised by the Finnish Maritime Administration.



In the port of Pietarsaari/Jakobstad port operations are handled by Euroports Pietarsaari Oy Ab. Import/export services comprise stevedoring, forwarding, ship's agency, warehousing, general cargo despatching and freight arrangement.

Euroports Pietarsaari serves shipping companies, freight agents, goods owners, forwarding agents, transport companies and handles connections to customs, pilots and authorities.

Efficient cargo-handling is enabled by modern equipment such as hydraulic cranes, container handler and a complete range of forklifts up to 16 ts.

The proximity of Pietarsaari/Jakobstad mills to the harbour affords many logistic advantages for export operations. The pulp, for instance, is conveyed directly from production line to port for warehousing and loading purposes. Transport tonnage is at the same time used efficiently: import and export products are carried on the same vessels.

The port operations within Euroports Pietarsaari have been certified and the tools for continuous improvement are provided by the following standards: Quality Management System ISO 9001, Environmental Management System ISO 14001 and Health and Safety System OHSAS 18001.

Efficiency, flexibility and punctuality will also in the future be the keywords for improving services to customers.



EUROPORTS

CONTACT

Alholmintie 80 (PO Box 50)
FI-68600 Pietarsaari/Jakobstad
FINLAND

TELEFAX +358-6-724 3240

e-mail: firstname.surname@euroports.fi
Agency: agency.fiprs@euroports.fi
Forwarding: forwarding.fiprs@euroports.fi

OPERATIVE DIRECTOR

Pauli Rautiainen Tel. +358 6 781 3612,
+358 40 585 2603

AGENCY MANAGER

Mats Furu Tel. +358 6 781 3616
+358 040 766 8042
Agency 24 h Tel. +358 40 585 2420

FORWARDING MANAGER

Michael Blomström Tel. +358 6 781 3614
+358 50 581 4990

Operations Manager
Tony Hanner Tel. +358 6 781 3626



6 TECHNICAL INFORMATION

PORT POSITION	N 63°42' 41" E 22° 41' 25"	
SPACING OF Bollards AND FENDERS	South, Buskö and Laukko II every 15 m, Laukko I and III every 18 m.	
LOAD OF Bollards	South, Buskö and Laukko II 750 kN (75 t), Laukko I and III 1000 kN (100 t)	
LOAD OF FENDERS	South, Buskö and Laukko II 750 kN, Laukko I and III 1 000 kN (100 t)	
ELECTRICITY	380 / 220 V 50 Hz	
VARIATIONS IN WATER LEVEL	No tidal variations, differences noted are results of weather or climatic conditions	
	MAX	+ 139 cm
	MHW	+ 89 cm
	MLW	- 70 cm
	MIN	- 113 cm
ICE CLASS DESIGNATIONS	1AS	extremely difficult ice conditions
	1A	difficult ice conditions
	1B	moderately difficult ice conditions
	1C	light ice conditions
	II	very light ice conditions
TYPICAL RESTRICTIONS TO NAVIGATION AND TONNAGE SIZE		Starting date
	At least class / least dwt	Pietarsaari / Jakobstad
	I, II 2000	14 January
	IA, IB 2000 / IC, II 3000	27 January
	IA, IB 2000	10 February
	IA 2000	12 February
	IA 4000	3 March
	IA 2000	30 April
	IA, IB 2000	2 May
	I,II 2000	7 May

ACCESS PASS PROCEDURE

Access to the port area requires an access pass. The access pass applications are processed and granted at Port Administration.

Vessels deliver a crew list to their agents who delivers them to the Port Administration. Vessel informs port control about crew alterations.

Without valid reason conveyance in the port area is prohibited. Due to ISPS regulations the port is not able to accept vehicles without advance notification. According to the advance notification a temporary transit permit is granted for visitors or transportation.

Transportation companies and visitors must apply the transit permit through the company they deliver or carry cargo or where they visit. Transit permit is personal and in the vehicle of the company car orientated.

In all the issues concerning access passes contact **Port Control Tel. + 358 6 723 1388, VHF 16 & 13, portcontrol@portofjakobstad.fi.**



SAFETY AND SECURITY

The Port of Pietarsaari/Jakobstad applies the international ISPS Code as well as assessments and security plans accepted by the Finnish Maritime Administration.

Safety and security matters require for instance the following notices: IMDG advance information on vessels, advance information on transport and advance information on visitors.

The Port of Pietarsaari/Jakobstad is responsible for the relevant maintenance of the dock area and traffic areas within the Port.

The quay-specific load-bearing capacity must be verified in conjunction with the use of cranes; the quay-specific information has been delivered to the operators.

All special transport and its arrangements within the Port area must also be agreed upon separately.

Photographing and video recording at the Port area are prohibited without permission from the Port Administrator.

Port lighting is controlled by on-duty service at **Port Control in centralised manner. Tel. + 358 6 723 1388, VHF 16 & 13, portcontrol@portofjakobstad.fi.**

OCCUPATIONAL SAFETY

The Port of Pietarsaari/Jakobstad requires that everyone uses CE safety clothing, provided with the employer's logos, to ensure the visibility of personnel at the Port Area. Also helmet and safety shoes are required, when working or moving outside the vehicle. Identification cards supplied by the Port of Pietarsaari are worn by permanent personnel working within the Port Area.

The speed limit for land traffic in the Port area is 30 km/h. An amber flashing light must be used on the roof of service vehicles and all machinery. Pedestrian traffic is only permitted on marked routes on the edges of the quay.

Containers or other equipment must not be placed or stored on traffic routes even temporarily. At railroads, the space required by rail traffic must be taken into account.

Hot work permits at the Port Area are requested from telephone number +358 6 723 1388.

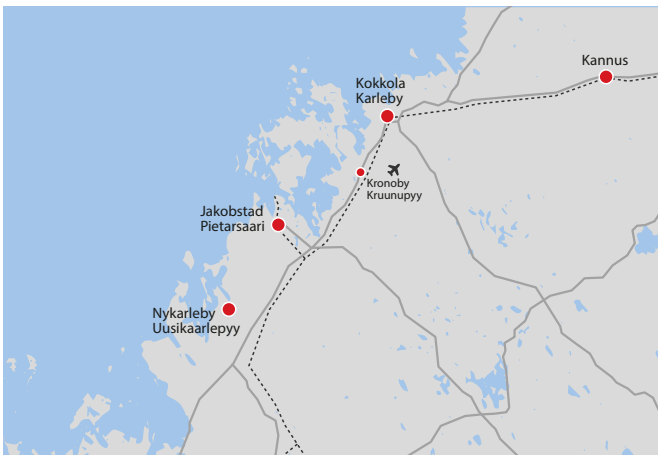
8 HARBOUR APPROACHES

ROAD AND RAILWAY NETWORK

According to the existing land, air and sea network, the location of the port of Pietarsaari/Jakobstad is ideal.

On the east side of the city of Pietarsaari runs highway 8 along the whole west coastline of Finland. During the last few years, the road and street network of the city of Pietarsaari has been under development and most of the heavy transportation has moved further from the city centre.

The road network has also been developed according to the need of the local forest industry which is also responsible for having such a good railway network.



PIETARSAARI/JAKOBSTAD CHANNEL

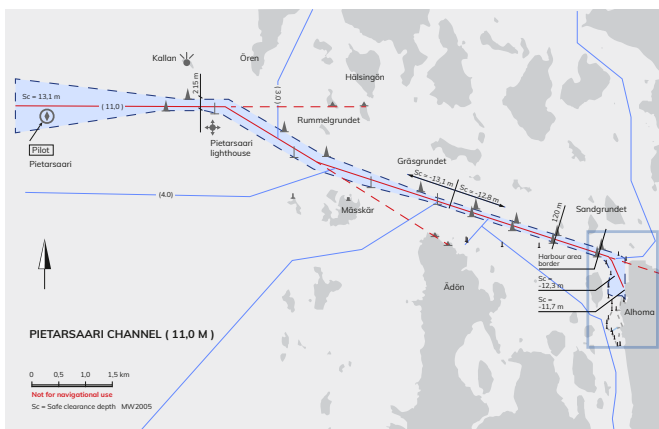
Maximum draught 11.0 m, safe clearance depth in the outer channel: 13.1 m, in the inner channel: 12.8 m. In the harbour area, at Laukko quay, 12.3/11.7 m, 8.2 m on Buskö, South and Cement quays. Minimum width 120 m. Designated speed in the outer channel: 11.5 knots, in the inner channel: 9.5 knots. Three lines in the channel, one in the harbour, all marked with boards. Lateral marks are lit.

The outer channel from Kallan to Mäskär is open and unsheltered from N-W-E winds. The inner channel – a stretch of 1.6 km – has been dredged and forms a 120 m wide canal. No heavy swell is created but due to the narrowness of the channel winds and suction, may have an impact on the handling of the vessel.

The area is normally ice-covered from the end of December to the beginning of May. During ice formation, winds and currents may create a heavy brash ice barrier between Pietarsaari Lighthouse and Mäskär. Later on ice ridges may occur off Pietarsaari Lighthouse. Ice movement may cause buoys to be pressed beneath the surface over the whole length of the channel.

Wind recommendations are max 10 m/s for inbound vessels of more than 150 m in length and 15 m/s for outbound vessels of the same size. Wind gauges from Tankar and Kallan Pilot Stations.

The fairway card can be downloaded from: www.portofpietarsaari.fi/en/port-area/fairways.



PILOTAGE

Pilot boarding position 63° 44.5' , 22° 29'.

Pilotage distance is 7 nautical miles. NB. In winter the pilot boarding position is agreed separately.

Pilot order from
pilotorder.west@finnpilot.fi.
Order form www.pilotorder.fi,
Tel. +358 20754 6153, fax. +358 20754 6163.

VTS

Bothnia VTS, VHF channel 67
 Tel. +358 20 448 7356
 Fax. +358 20 448 7357

TUGS

Privately owned tugs are available 24 hours a day by requiring 3 hours notice in advance.

Simson and Bock 24 h
Tel. +358 40 557 5692. www.kraftline.fi.

T/B Simsons (OJGB) length is 30.87 meters, moulded breadth 8.40 meters and maximum draft 3.60 meters. Gross tonnage is (GRT / GT) 234 and net tonnage (NRT / NT) 70.

Machinery 1 × Nohab Polar MN 18, 1236 kW.

Tractor tug Bock; length 28,2 m, breadth 8,4 m and maximum draft 4,66m. Gross tonnage 213GT.

Machinery 2 × Deutz SBA 8 M 528, 1560kW.



10 ENVIRONMENT

ENVIRONMENTAL POLICY

With evolving legislation, environmental considerations have become one of the important operational conditions of the port alongside safety and security.

Our aim is to develop port operations according to the principles of sustainable development in conjunction with the port operator and third parties. The most important environmental aspects of the port of Pietarsaari / Jakobstad are the safe handling of dangerous substances and chemicals, and the limiting and reduction of emissions.

ENVIRONMENTAL MANGEMENT

The port of Pietarsaari/Jakobstad follows the environmental permit according to the environmental protection law and ISO 14001 environmental management system

The environmental permit defines the permissible operation and terms which must be observed.

The most important environmental effects of the port operations are related to port construction, the use of land and water space, water- and road-traffic and emissions, waste management, noise from loading and unloading and other emissions such as dust and odours.

WASTE MANAGEMENT

In Pietarsaari/Jakobstad port area, instructions for waste management must be followed by taking in and handling waste from vessels and port operations.

Waste instructions are based on laws and regulations on waste management given by the European Union and Finnish State. By following the instructions and delivering waste appropriately to waste collection stations, an environmental load caused by waste from vessels and port operations can be decreased and contaminations of marine environment prevented.

Waste instructions are downloadable at: www.portofpietarsaari.fi "[Waste management instructions for vessels](#)".

WASTE MANAGEMENT CHARGES OF VESSELS

The currently valid tariffs are charged from all vessels in the port of Pietarsaari/Jakobstad, except vessels exempt from the obligation to leave waste at the port.

Garbage fee and special fee for oily waste disposals are always charged from all vessels.

Oily waste and sewage, hazardous and mixed waste are charged according to actual costs.

Violations of the instructions for waste management are liable to compensate any extra costs incurred by the port of Pietarsaari/Jakobstad.



PORT OF PIETARSAARI / JAKOBSTAD

Alholmintie 76
68600 PIETARSAARI-JAKOBSTAD
FINLAND
Tel. +358 6 723 6128
www.portofpietarsaari.fi
www.portofjakobstad.fi
Email. office@portofpietarsaari.fi

Managing Director

Juha Hakala
Tel. +358 40 585 2332
Email. juha.hakala@portofpietarsaari.fi

Technical Manager

Johanna Heinoja
Tel. +358 40 508 1906
Email. Johanna.heinoja@portofpietarsaari.fi

Port Control

Tel. +358 6 723 1388
Email. portcontrol@portofpietarsaari.fi

PORT OPERATOR

Euroports Pietarsaari Oy Ab
Alholmintie 80
PO Box 50
68600 PIETARSAARI-JAKOBSTAD
FINLAND

Fax. +358 6 724 3240
Email. firstname.surname@euroports.fi

Operative Director

Pauli Rautainen
Tel. +358 6 781 3612, +358 40 585 2603

Agency Manager

Mats Furu
Tel. +358 6 781 3616, +358 40 766 8042
Agency 24 h Tel. +358 40 585 2420

Forwarding Manager

Michael Blomström
Tel. +358 6 781 3614, +358 50 581 4990

Operations Manager

Tony Hanner
Tel. +358 6 781 3626

OY KRAFTLINE AB

Alholmintie 76
68600 PIETARSAARI-JAKOBSTAD
FINLAND
Tel. +358 50 370 0410,
+358 40 501 4135,
24h +358 40 557 5692 Simson

www.kraftline.fi
Email. joachim.strang@kraftline.fi,
henry.hermanson@kraftline.fi

FINSEMENTTI OY

Alholmintie 74
68600 JAKOBSTAD-PIETARSAARI
FINLAND
Tel. + 358 20 120 6251
www.finnsementti.fi

UPM-KYMMENE OYJ

PO Box 42
PIETARSAARI-JAKOBSTAD
FINLAND
Tel. + 358 2041 6113
www.upm-kymmene.com

WIBAX PIETARSAARI TERMINAL

Laukontie 5
68600 JAKOBSTAD-PIETARSAARI
FINLAND
Tel. + 358 6 723 1876, +358 400 195 922
terminalgroup@wibax.com
wibax.com

PORT OF

JAKOBSTAD  PIETARSAARI

AT YOUR SERVICE

PORT OF PIETARSAARI / JAKOBSTAD

Alholmintie 76
FIN 68600 PIETARSAARI-JAKOBSTAD
FINLAND

Tel. +358 6 723 6128

www.portofpietarsaari.fi
www.portofjakobstad.fi
office@portofpietarsaari.fi